

MediaStation Pro

Wireless Network Multimedia Hard Drive

User Guide

English



Contents

Introduction	3
Precautions	3
Specifications	3
Package Content	4
Product Overview	4
1. Use as External USB HDD	5
1.1 Copy Data via USB	5
1.1.1 Windows 2000, XP	5
1.1.2 Linux	6
1.1.3 Mac	6
2. Connect to PC via Network	6
2.1 Wired LAN Connection	6
2.2 Wireless LAN Connection	7
3. Shared File Playback (Stream)	9
3.1 Windows 2000	9
3.2 Windows XP	11
3.3 Windows Vista	13
4. Use USB Host	15
5. Connect to External AV Device	15
5.1 Connect Video Cable	15
5.2 Connect Audio Cable	16
6. Basic Setup	17
6.1 Video Setup	17
6.2 Audio Setup	17
6.3 Network Setup	18
6.4 Wireless Setup	19
6.5 Wireless Security Setup	19
6.6 LED Setup	19
6.7 Photo View Setup	19
6.8 Language Setup	20
6.9 Screen Ratio Setup	20
6.10 Auto Play Setup	20
6.11 Internet (How to setup the Internet)	21
6.12 i-RADIO	21
6.13 SKIN	22
6.14 ETC	23
6.15 Protocol	24
6.16 FTP Server / Client setup	24
7. How to Play (Remote Control)	25
7.1 Basic Screen Menu	25
7.1.1 Mode Selection	25
7.1.2 File Selection	25
7.2 Play Video Files	26
7.3 Play DVD File	27
7.4 Play Audio File	28
7.5 Play Photo File	29
7.6 Make a Play List	30
7.7 Create a Private Folder	31
8. Firmware Upgrade	32
Technical Support	32
Limited Warranty Terms	32
WEEE Notice	32
FCC Compliance	33
CE Declaration - EC DECLARATION OF CONFORMITY	33
RoHS Compliance	33

Introduction

MediaStation Pro fully supports HD (High Definition) files and can stream media files from a PC via wireless (802.11b/g) or wired LAN. It also has USB host that can support external USB storage devices and memory card readers..

- Wireless High Definition Multimedia Player
- Features powerful media decoding chip -Sigma Design EM8621 Chip
- Full HD file playback up to 1920 x 1080p
- HDMI Video output
- IEEE 802.11g(54Mbps) 802.11b(11Mbps) wireless standard / 10/100Mbps wired LAN
- Wireless security - WEP (Wired Equivalent Privacy)
- Wireless Infrastructure and Ad-Hoc Mode
- External storage device for PC via USB 2.0 connection
- 2x USB 2.0 host connectors for external USB devices
- DVD Manager - Playback of DVD File same as Original DVD title
- Video output - HDMI, Component, S-Video and Composite
- Audio output - Stereo, Digital Coaxial & Optical 5.1 ch. Sound, DTS down mix to stereo
- FTP Sever / Client function
- Internet Radio function
- UPnP function
- Firmware Upgradable

Precautions

Please read the followings carefully and refer to [Cautions] in the manual for proper use.

Codec	*There are very many different codecs and file formats in use today. MediaStation Pro may not play all associated media files. Please check list of supported codecs later in this manual.
USB Device	* Connect the power adapter when you connect MediaStation Pro to a PC. Do not connect MediaStation Pro with a cable longer than 3m. If the USB cable is too long the transfer speed may be adversely affected. We recommend you to use the supplied USB cable. If you connect this device to USB 1.1 Host Adapter the speed is USB 1.1 (Max. 12Mbps)
USB Host	* The USB Host may not be compatible with all USB storage devices.
Network connection	* Data transfer through wired or wireless network connection may be disrupted by other network traffic which may affect playback performance.
Radio transmission	* MediaStation Pro generates radio waves, do not use in areas where radio transmissions are prohibited e.g. hospitals and aircraft.
Data Backup	* We strongly recommend you to back up the data to another safe media. We are not responsible for data damage or loss.
Handling	* Handle MediaStation Pro with care. Do not drop or subject to impact or shock.
Disassembly	* Do not disassemble MediaStation Pro as you may cause damage and you will invalidate your warranty
Exposure to water, moisture, etc	* Do not expose MediaStation Pro to oil, water, dust, moisture or rain and wind.
Cautions for heat	* Keep MediaStation Pro away from heated areas. Set it up in well-ventilated places.
Cautions for magnetic materials	* Keep all magnetic materials away from MediaStation Pro. Magnetic materials such as speakers or magnets may erase or cause damage to the data stored in the hard disk.

Specifications

Product Name	MediaStation Pro
Power	12V / 3A
Weight	1300g (including HDD & wireless antenna)
Dimension	48 x 150 x 210 mm (without wireless antenna)
Available OS	USB Device Compatible: Windows 2000/XP/Vista, Mac OS 9.0 higher, Linux 2.4 higher
USB Device	Device Port x 1ea, 480Mbps USB 2.0 (USB 1.1 compatible)
USB Host	Host Port x 2ea, 480Mbps USB 2.0 (USB 1.1 compatible) Supporting to read USB devices e.g. External USB HDD, ODD, Flash Drive, Card Reader
Wired LAN	10/100 Mbps LAN (RJ-45) x 1ea, 100BaseTx:UTP/STP Category 5 LAN cable compatible
Wireless LAN	54Mbps IEEE802.11g, 5dBi detachable antenna x 1ea, SMA type connector
HDD Type	3.5" SATA HDD

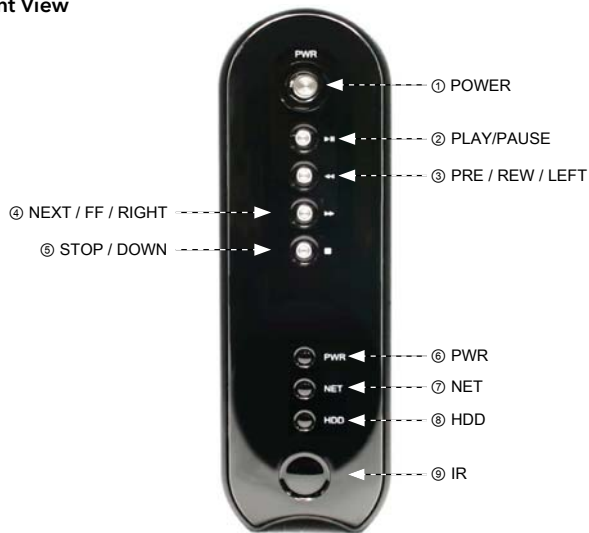
HDD File System	NTFS / FAT32 (Preformatted to FAT32)
TV Type	NTSC / PAL
Video Format	AVI : MS-MPEG4v3/XviD/WMV9 (Not support XviD which has GMC option applied) WMV : WMV9 ASF : WMV9 MP4 : MPEG4 Video DAT : MPEG1 VOB : MPEG2 MPG/MPEG : MPEG1/MPEG2 TP/TS/TRP : HD-MPEG2/SD-MPEG2 ISO, IFO
Audio Format	MP3, OGG, WAV, WMA
Photo Format	JPG/JPEG, PNG, BMP
Video Output	COMPOSITE S-VIDEO HD COMPONENT Y, Pb, Pr (480p, 720p, 1080i) HDMI (480p, 720p, 1080i, 1080p)
Audio Output	STEREO L-R S/PDIF Digital Output (Coaxial/Optical)
Working Temperature	0°C ~ 60°C
Working Humidity	10% ~ 50%

Package Contents

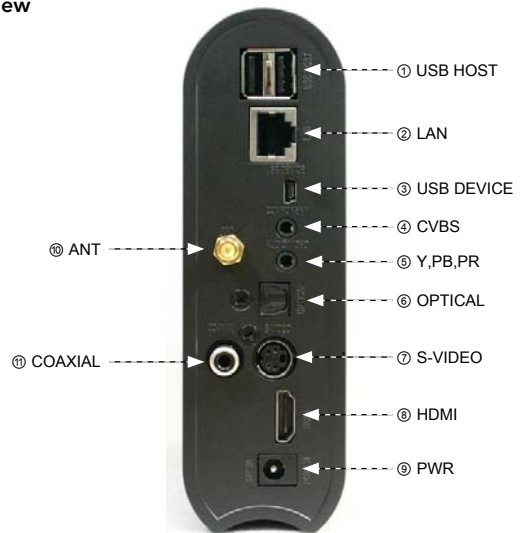
Mediastation Pro network multimedia drive, Remote Control (+Battery), Stand, Composite video / Stereo audio cable, Component Video cable, HDMI cable, USB Cable, External AC Power Adapter, User manual CD , Quick start guide

Product Overview

Front View



Back View



Front View	① POWER	Power On, Off
	② PLAY / PAUSE	Play all files from selected file / Pause
	③ PRE / REW / LEFT	Go to the previous page or Rewind / Left key
	④ NEXT / FF / RIGHT	Go to the next page or Fast Forward / Right key
	⑤ STOP / DOWN	Stop / Scroll down key
	⑥ IPWR	Power LED
	⑦ NET	Network LED
	⑧ HDD	HDD running LED
	⑨ IR	IR Receiver

Back View	① USB HOST	Connect to an external USB device with USB cable
	② LAN	Connect LAN cable for wired networking
	③ USB Device	Connect to a computer with USB cable
	④ CVBS	Connect Composite cable for video output
	⑤ Y, PB, PR	Connect component Y, Pb, Pr cable for video output
	⑥ OPTICAL	Connect Optical cable for 5.1 ch. Digital audio output
	⑦ S-VIDEO	Connect S-Video cable for video output
	⑧ HDMI	Connect HDMI cable for video output
	⑨ PWR	Connect power adapter
	⑩ ANT	Connect wireless antenna for wireless networking
⑪ COAXIAL	Connect Coaxial cable for 5.1 ch. Digital audio output	

1. Use as External USB HDD

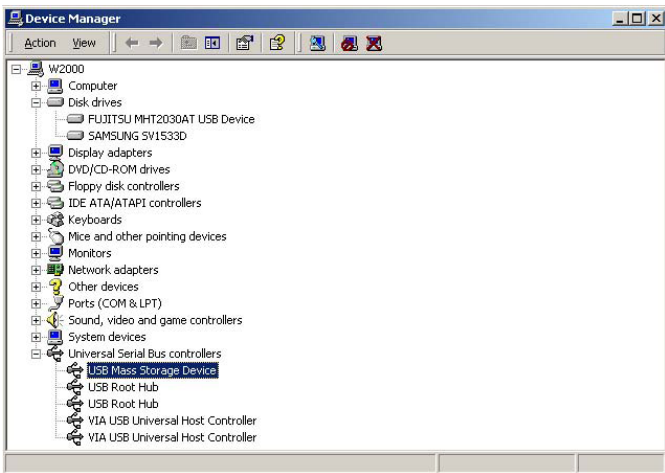
1.1 Copy Data via USB

It is possible to use as a external USB hard disk drive in case of inserting hard disk into MediaStation PRO. You can copy data from your PC to built-in HDD of MediaStation Pro via USB. It is possible to play media files at the hard disk on TV set.

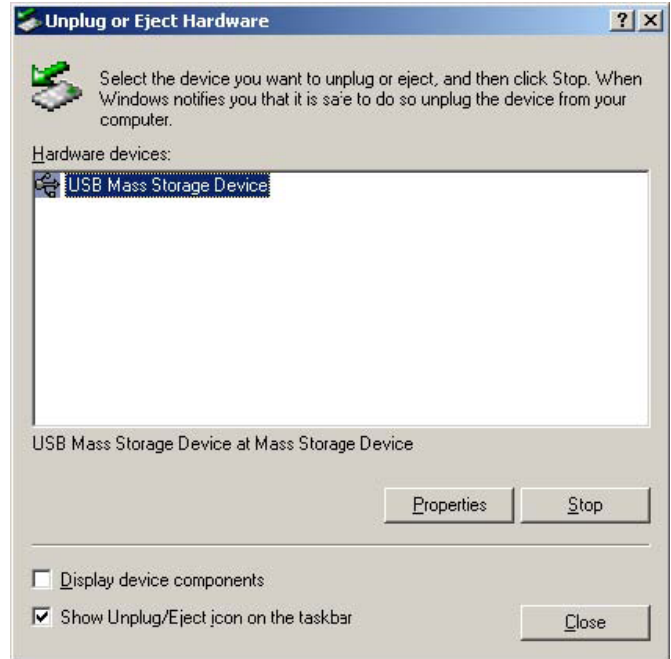
* When connecting PC, you have to connect power cable of MediaStation Pro

1.1.1 Windows 2000, XP, Vista

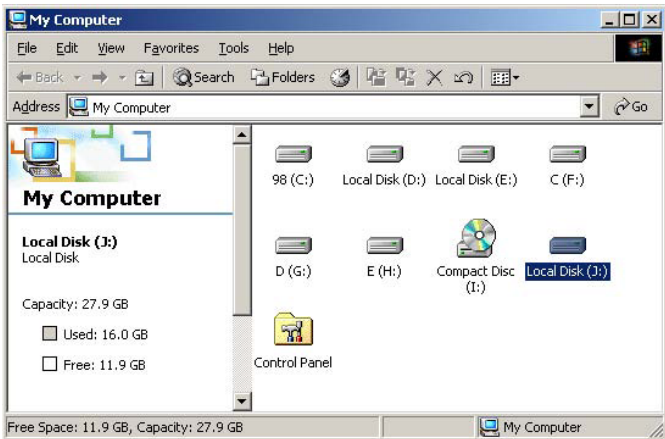
1) After connecting MediaStation Pro and plug power cable, Windows itself will install driver automatically. And then, check the driver installation at Windows [Start > Settings > Control panel > (switch to classic View on Windows XP) > system > Hardware > Device manager > Universal Serial Bus controllers > USB Mass Storage Device].



3) After copying data, remove MediaStation Pro with using remove icon at Windows right-down corner. If you don't follow this procedure, data and MediaStation Pro may have damage.



2) Check 'My Computer' or 'Explorer', there should be a new volume. You can copy any data to this volume.



✓ When you see 'Non High-Speed USB Hub Message' The message will be displayed On windows XP when you plug MediaStation Pro into USB 1.1 spec. Host adapter.

✓ If new volume is not be appeared, check HDD format or not. W and HDD file system. Windows 2000, XP detect both FAT32 and NTFS file system.

1.1.2 Linux

✓ It can be available on Linux 2.4 higher.

Automatic Mount

After booting, do log-in.

Connect MEDIASTATION PRO -> Power On MEDIASTATION PRO -> Check the detection with [fdisk] -> make Mount Pointer (ex. mediatest) at Folder Mount(/mnt) -> Edit [/etc/fstab] -> add the following;

```
/dev/sda /mnt/mediatest vfat noauto, user 0 0
```

(in case of FAT32 HDD)

```
/dev/sda /mnt/mediatest ntfs noauto, user 0 0
```

(in case of NTFS HDD)

Do Log-in again.

✓ Above example "sda" is assumed that the MEDIASTATION PRO will be detected as "sda" on your system. If not, you have to write the drive name which is detected as "USB Mass Storage", not "sda"

Manual Mount

Connect MEDIASTATION PRO -> Power On MEDIASTATION PRO -> Check the detection with [fdisk] -> make Mount Pointer (ex. mediatest) at Folder Mount(/mnt) -> Edit [/etc/fstab] -> add the following;

```
mount -t vfat /dev/sda /mnt/mediatest (in case of FAT32 HDD)
```

```
mount -t ntfs /dev/sda /mnt/mediatest (in case of FAT32 HDD)
```

✓ Above example "sda" is assumed that the MEDIASTATION PRO will be detected as "sda" on your system. If not, you have to write the drive name which is detected as "USB Mass Storage", not "sda"

How to stop using

Do [unmount] at Device Control.

1.1.3 Mac

✓ It can be available on Mac 9.0 higher.

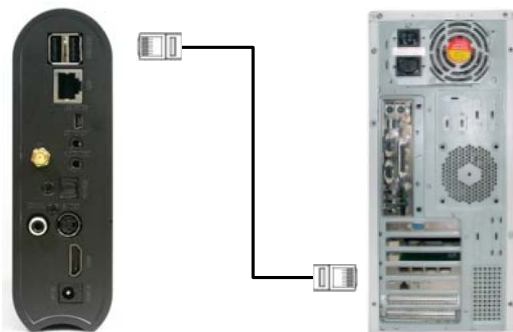
No need to install the installation driver at Mac OS 9.x version and the MEDIASTATION PRO will be detected automatically. If the MEDIASTATION PRO is detected correctly, an icon is appeared at a monitor.

When removing MEDIASTATION PRO safely, drag the icon to a trash and unplug MEDIASTATION PRO.

2. Connect to PC via Network

2.1 Wired LAN Connection

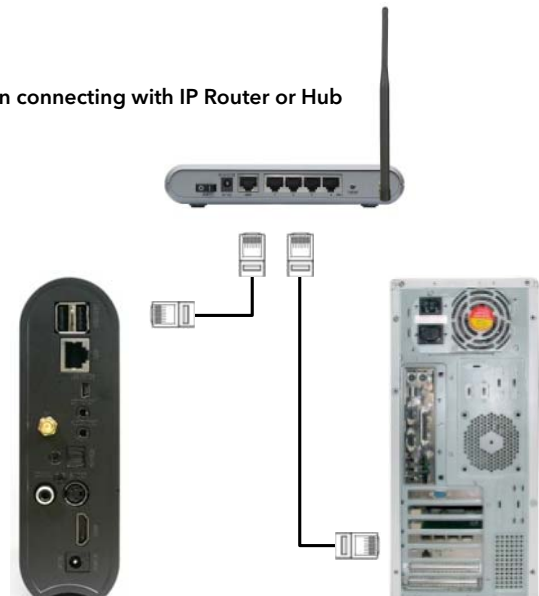
When connecting Computer to MEDIASTATION directly



Connect LAN cable to LAN port between MEDIASTATION and PC. In this case, you have to use Cross LAN cable type generally.

[TIP] If the computer's LAN card was connected to Internet line, you can mount additional LAN card to your PC and connect that additional LAN card to MEDIASTATION.

When connecting with IP Router or Hub



Connect LAN cable to LAN port between IP Router or Hub.

In this case, you have to use Direct LAN Cable type generally.

✓ When you want to play shared multimedia files on network, refer to "3.Shared File Playback (Stream)".

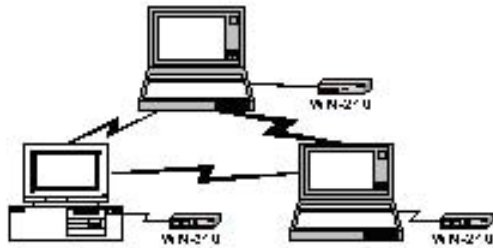
2.2 Wireless LAN Connection

MediaStation Pro supports two types of wireless structure-Infrastructure mode & Ad-Hoc mode.

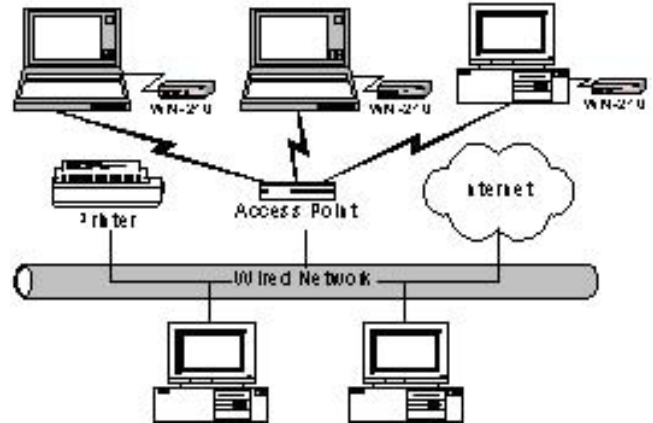
Ad-Hoc Mode
1:1 wireless LAN connection type between wireless adapter and MediaStation Pro without wireless access point.

Infrastructure Mode
Wireless LAN connection type with Wireless Access Point.

Ad-Hoc Network Configuration



Infrastructure Network Configuration



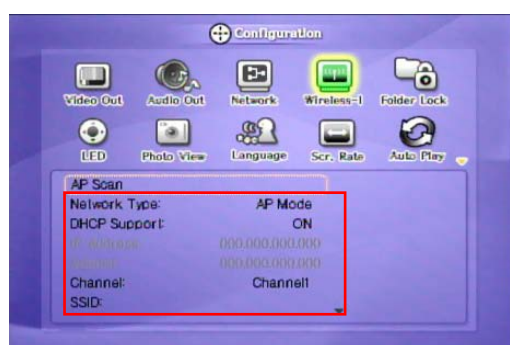
✓ Note
Wireless Access Point (Infrastructure Mode) or Wireless Adapter (Ad-Hoc Mode) is required for wireless connection. IEEE 802.11g wireless standard is recommended for better wireless environment. MediaStation Pro is compatible with IEEE 802.11g & b standard.



- ① Move to Setup screen by pressing [SETUP] button.
- ② Move to 'Wireless-I' icon and press [OK] button. Setup box will be displayed under icon menu..
- ③ Move to 'AP Scan' and press [OK] button. Available wireless network are detected and displayed.



- ④ Select preferred network from list of available wireless networks.
*Wireless network information is displayed.
-SSID: Name of Wireless Network
-Connection Mode: AP Mode (to connect an Access Point)
Ad-hoc Mode (to connect wireless adapter)
-Channel: Wireless channel used by wireless station



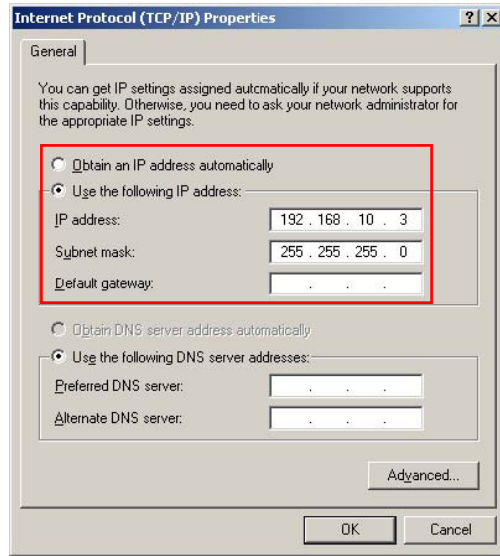
- ⑤ Information of wireless station will be displayed. Press [SETUP] for saving configuration.

✓ Note: When connecting Ad-Hoc Mode, manual setting of IP Address and Subnet mask will be needed.

Manual setting of IP address and Subnet mask of wireless adapter and MediaStation Pro will be required. Disable DHCP and enter "IP Address" and "Subnet mask". IP address must be different between MediaStation Pro and wireless adapter, subnet mask must be the same for both MediaStation Pro and wireless adaptor.
 Example: MediaStation Pro: IP Address(192.168.10.2) Subnet(255.255.255.0) ==> Wireless adapter: IP Address(192.168.10.3) Subnet mask (255.255.255.0)



<MediaStation Pro IP manual setting>



<Wireless Adapter IP manual setting>



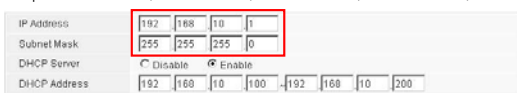
Ⓞ [WIRELESS] icon is activated. Select the icon, and the PC list on the network is displayed. Access your preferred PC and files stored on it.

✓ Note: When wireless icon is not activated or not connected to wireless station.

1. [Waiting or Rebooting] It might take some time to assign IP address from AP in case of AP Mode. If it fails to connect reboot Access Point and MediaStation Pro simultaneously.

2. [Manual Setting of IP address and Subnet mask] In case of AP Mode, disable DHCP support and set IP Address and subnet mask manually. IP address must be different between MediaStation Pro and wireless adapter, subnet mask must be the same for both MediaStation Pro and wireless adaptor.

Example: MediaStation Pro: IP Address(192.168.10.2) Subnet(255.255.255.0) ==> Wireless adapter: IP Address(192.168.10.3) Subnet mask (255.255.255.0)



Check IP address of AP



Manual Setting of IP address and subnet mask MediaStation Pro

✓ Note: When connecting to AP with wireless security
 If wireless network has security applied you will be required to enter appropriate key to enable communication. MediaStation Pro supports the following wireless security protocols: WEP, WPA - TKIP or WPA-AES



Select appropriate security protocol for your wireless network and then enter the corresponding security key.
 Press [OK] to save configuration.

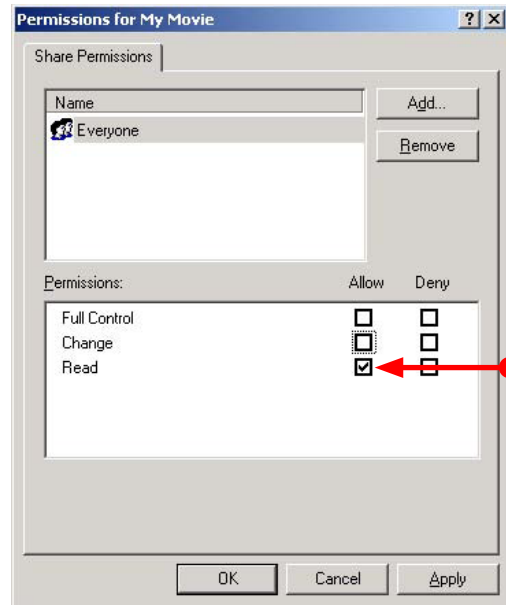
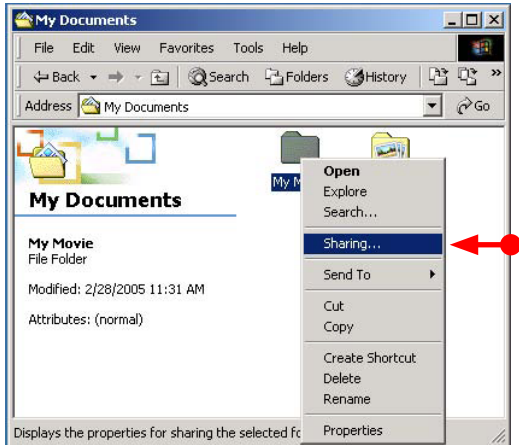
3. Shared File Playback (Stream)

After connecting LAN cable, you have to set network configurations of both Computer and MediaStation Pro.

*It is possible to assign IP address and Subnet Mask of MediaStation Pro as dynamic or static.

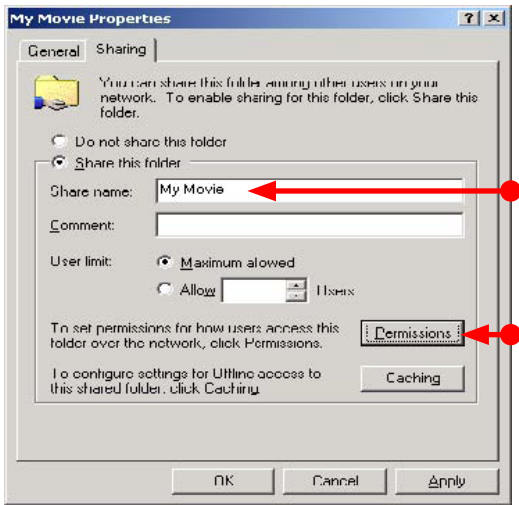
3.1 Windows 2000

1. Select a folder which you want to share. Right-click the folder and click 'Sharing' in pop menu.



2. Check 'Share this folder' and write 'share name'.
For example, "My Movie"

✓ Make sure to write 'share name' within 12 characters in English.



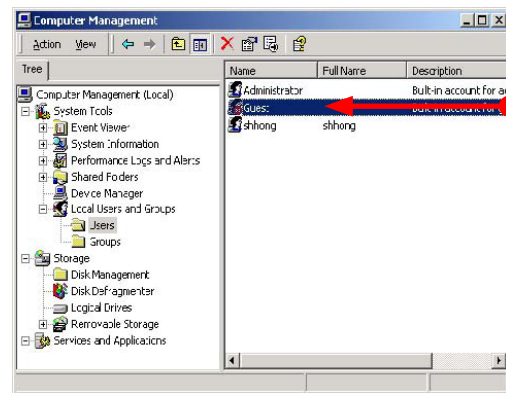
3. Click 'Permissions' and check whether "Everyone" account is or not. If not, add "Everyone" account.

✓ Recommend only to use 'Read>Allow' at Permissions.

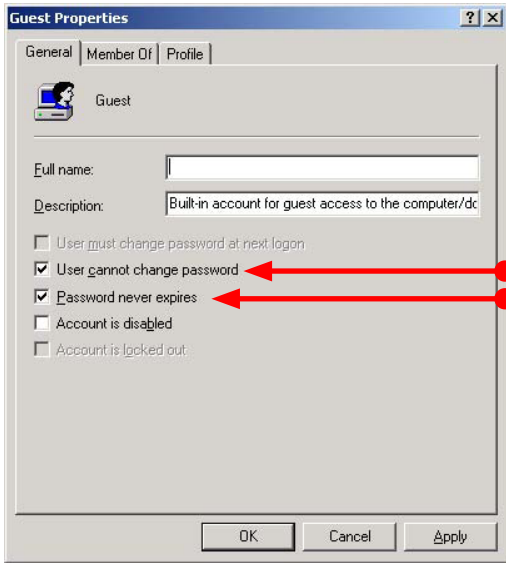
4. After that, the shared folder will be displayed as following picture.



5. Move to [Settings > Control Panel> Administrative Tools > Computer management > Local Users and Groups > Users], and double click 'Guest'.

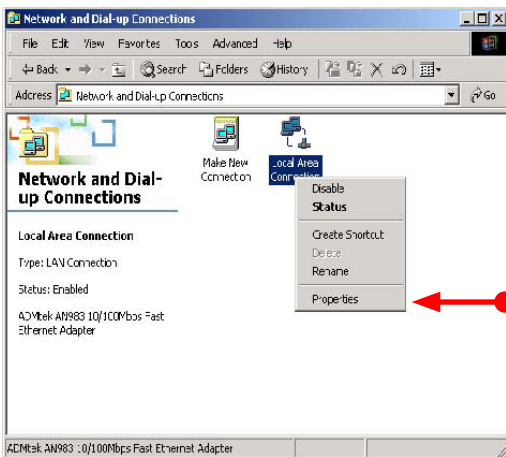


6. Check 'User cannot change password' and 'Password never expires'.

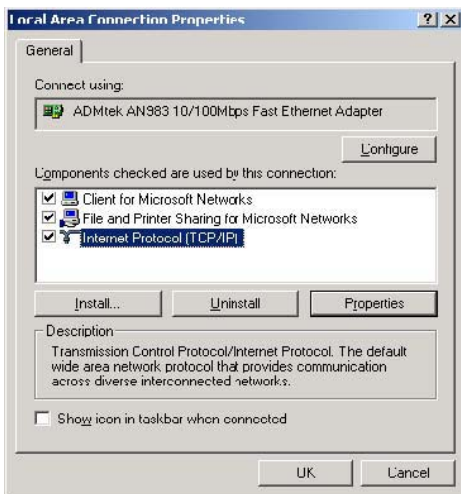


7. Move to [Control Panel>Network and Dial-up Connections], and select Properties of 'Local Area Connections' by right click of mouse.

✓ If you see two or more 'Local area connections', select one that you will use for connecting to MEDIASTATION PRO.



8. Double click 'Internet Protocol (TCP/IP)' that you want to use on your computer.

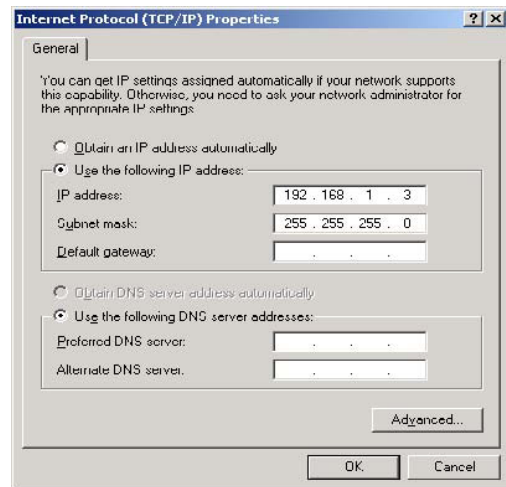


9. Check 'Use the following IP address', and write 'IP address' & 'Subnet mask' that you want to use.

For example,

IP address: 192.168.1.3

Subnet mask: 255.255.255.0



✓ If you have already been 'obtained an IP address automatically' from DHCP Server or IP Router on your local area network, you don't need to write specific IP address absolutely. Use 'Obtain an IP address automatically' or write IP address & Subnet mask that DHCP Server or IP Router provide.

10. Set the network configurations of MediaStation Pro.

✓ You have to connect MediaStation Pro to TV set for this setup. See "6.1 Connect Video Cable".

Press [SETUP] of remote control for moving to setup screen. On that screen, select 'DHCP Support Off' and write IP address & Subnet mask.

For example,

IP Address: 192.168.1.2

Subnet mask: 255.255.255.0



After writing, press [SETUP] again for saving configurations.

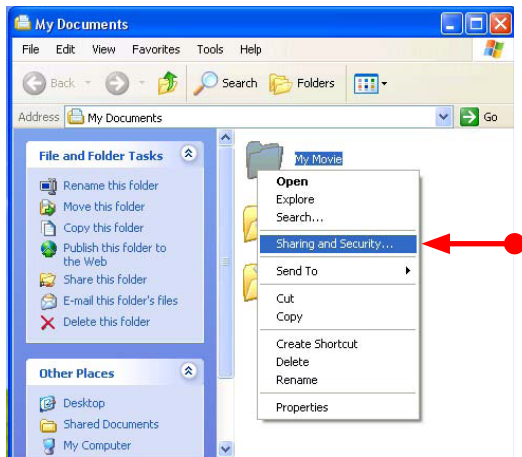
✓ If you have already been provided dynamic IP address from DHCP Server or IP Router on your local area network, you don't need to write static IP address absolutely. Use 'DHCP on' or write IP address & Subnet mask that DHCP Server or IP Router provide.
 ✓ Check 'IP address obtained automatically' When you use 'DHCP On', you can see the IP address on information screen with pressing [INFO] button.



<MediaStation Pro's IP Address>

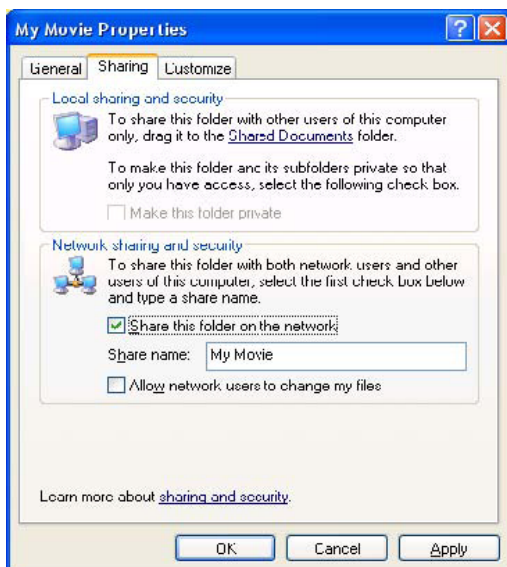
3.2 Windows XP

1. Select a folder which you want to share. Right-click the folder and click 'Sharing and Security' in pop menu.



2. Check 'Share this folder on the network' and write 'Share name'. For example, "My Movie"

✓ Make sure to write 'share name' within 12 characters in English.

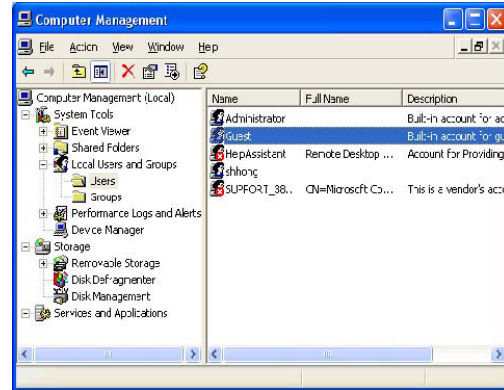


3. After that, the shared folder will be displayed as following picture.

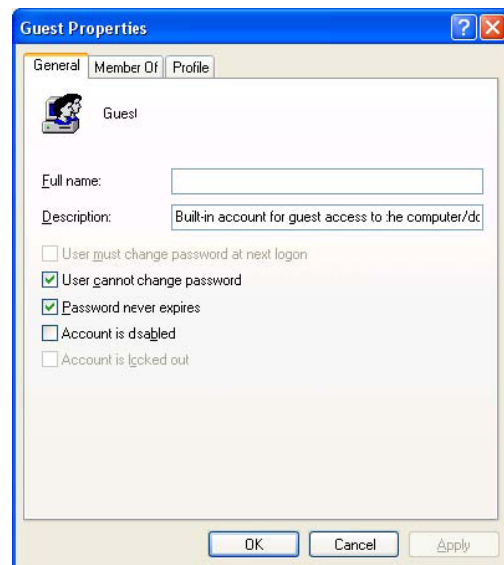


4. Move to [Settings>Control Panel>Administrative Tools>Computer management>Local Users and Groups>Users], and double click 'Guest'.

✓ This is for Windows XP Professional. Windows XP Home users can't see this figure. Go to next number 6).
 ✓ If you can't find 'Administrative Tools' at Control Panel, click "Switch to classic view" in left-up corner on screen.

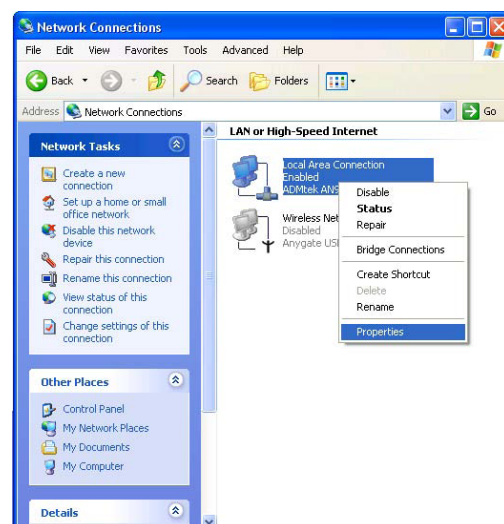


5. Check 'User cannot change password' and 'Password never expires'.

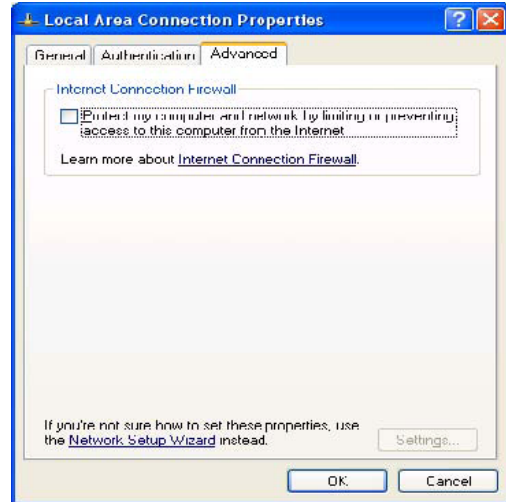
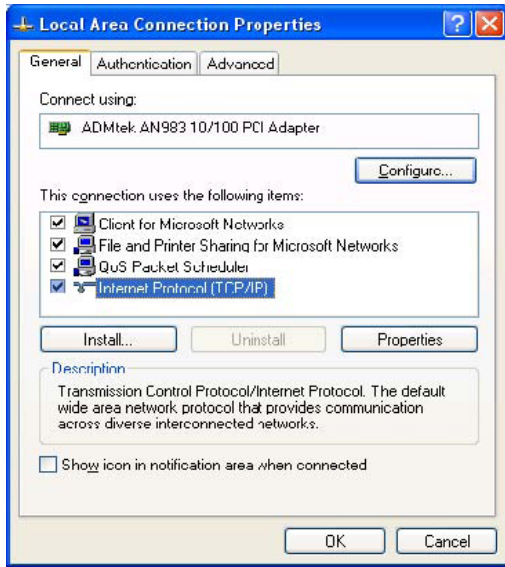


6. Move to [Control Panel>Network connections], and select 'Local area connections' properties by right click of mouse.

✓ If you can't find 'Administrative Tools' at Control Panel, click "Switch to classic view" in left-up corner on screen.
 ✓ If you see two or more 'Local area connections', select one that you will use for connecting to MediaStation Pro.



- Double click 'Internet Protocol (TCP/IP)' that you want to use on your computer.
- At above number 7) figure, click 'Advanced' Tab. Disable 'Internet Connection Firewall'.



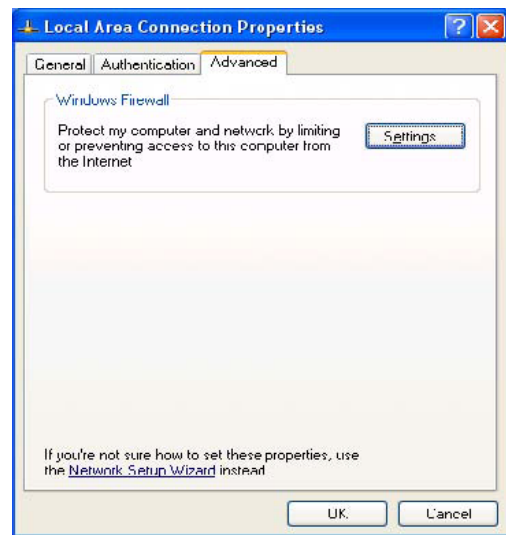
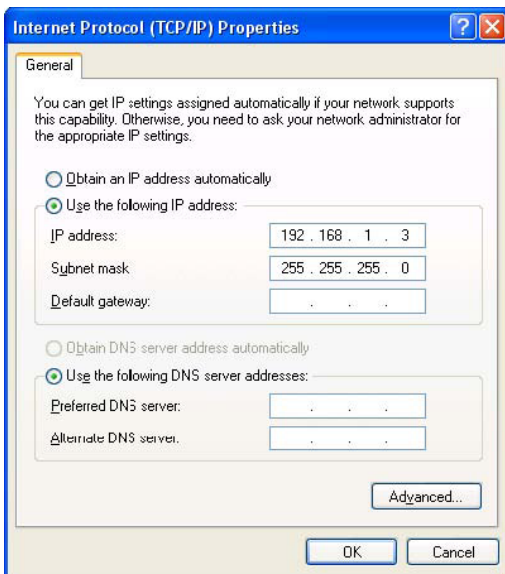
✓ If you use service pack 2, refer to the following figures. Click 'Settings' at 'Windows Firewall'

- Check 'Use the following IP address', and write 'IP address' & 'Subnet mask' that you want to use.

For example,

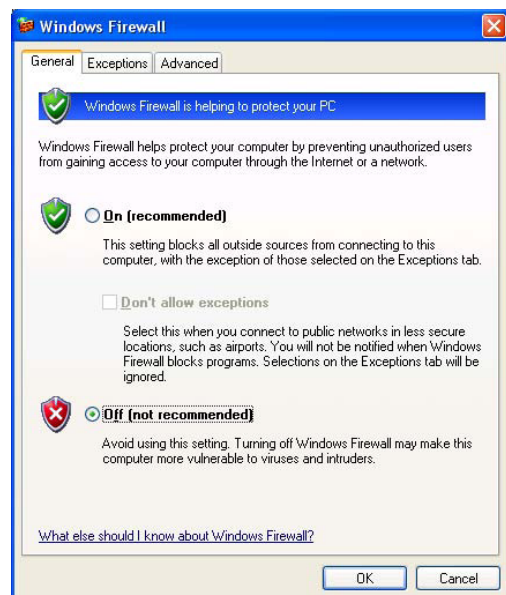
IP address: 192.168.1.3

Subnet mask: 255.255.255.0



Check 'Off' and click 'OK'

✓ If you have already been provided dynamic IP address from DHCP Server or IP Router on your local area network, you don't need to write static IP address absolutely. Use 'Obtain an IP address automatically on' or write IP address & Subnet mask that DHCP Server or IP Router provide.



10. Set the network configurations of MediaStation Pro.

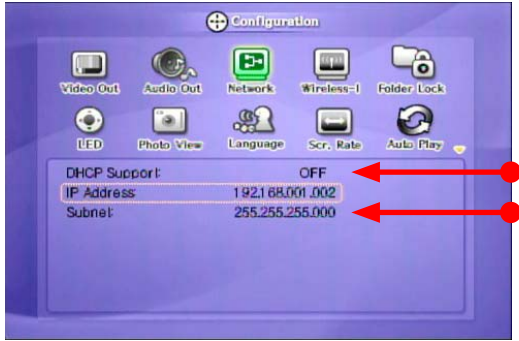
✓ You have to connect MediaStation Pro to TV set for this setup. See "6.1 Connect Video Cable".

Press [SETUP] of remote control for moving to setup screen. On that screen, select 'DHCP Support Off' and write IP address & Subnet mask.

For example,

IP Address: 192.168.1.2

Subnet mask: 255.255.255.0



After writing, press [SETUP] again for saving configurations.

✓ If you have already been provided dynamic IP address from DHCP Server or IP Router on your local area network, you don't need to write static IP address absolutely. Use 'DHCP on' or write IP address & Subnet mask that DHCP Server or IP Router provide.

✓ Check 'IP address obtained automatically' When you use 'DHCP On', you can see the IP address on information screen with pressing [INFO] button.

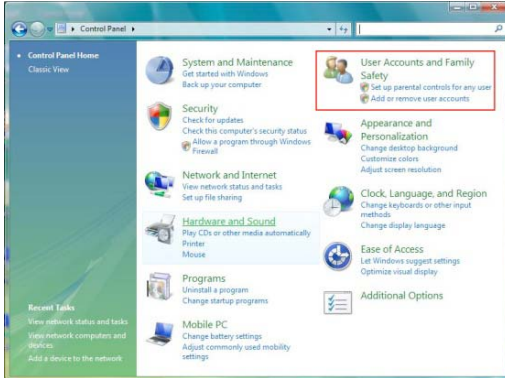


<MediaStation Pro's IP Address>

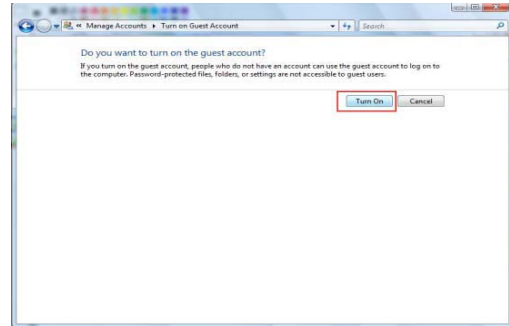
3.3 Windows Vista

Before you do "folder sharing", you need to set up 3 things for Network sharing.

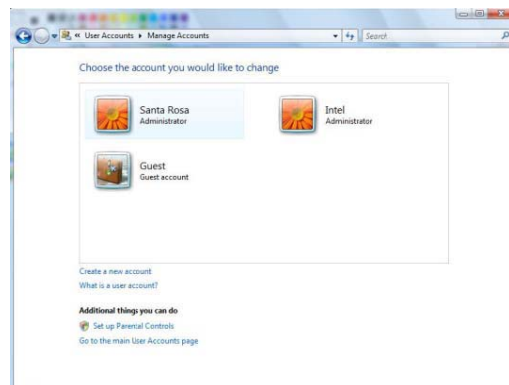
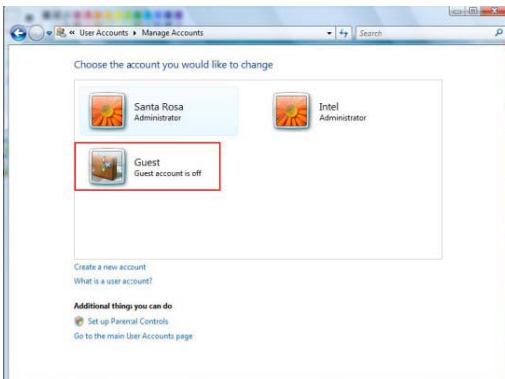
1. Setup of User Accounts and Family safety
 - a. Click Start > Settings > Control Panel > Users Accounts and Family safety



- c. If the "Guest" account is off, then switch it to "On".

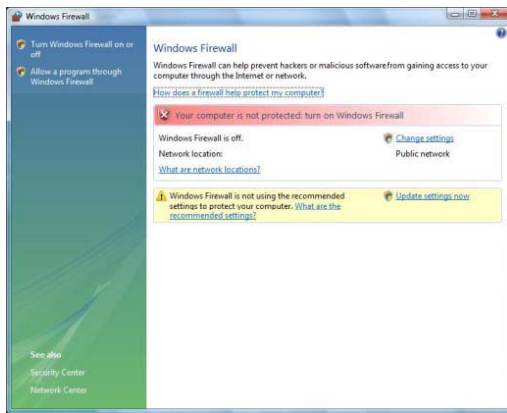


- b. Make sure the account is "Guest".

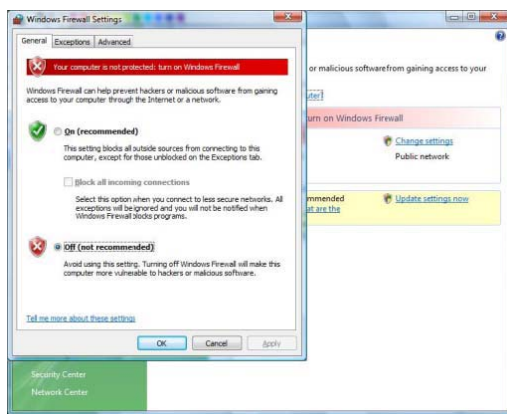


2. Disable "Firewall"

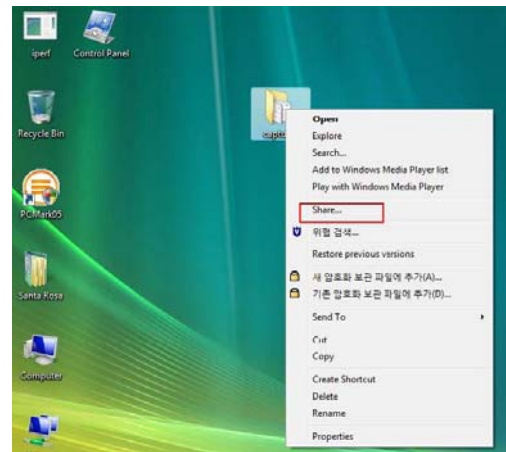
a. Click Start > Setting > Control Panel > Security > Windows Firewall on / off



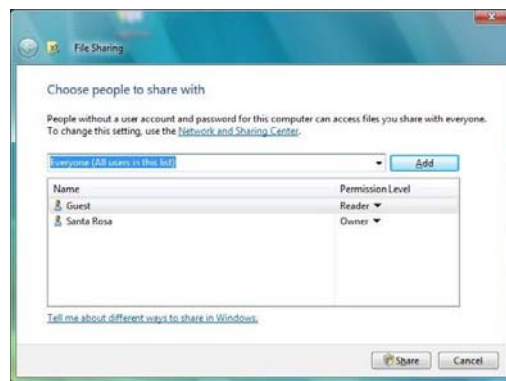
b. Click at 'Off (not recommended)



c. make a folder you want to share.



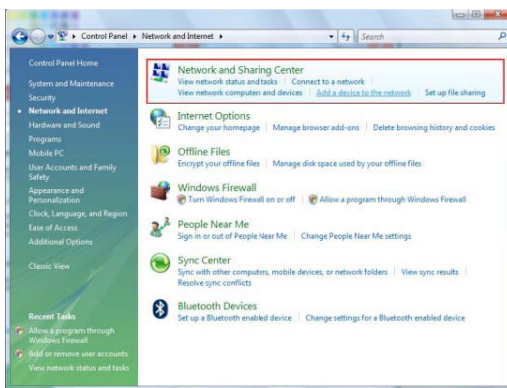
d. You will get a popup "Choose people to share with" then select "Everyone (All users in this list) and press "Add" button.



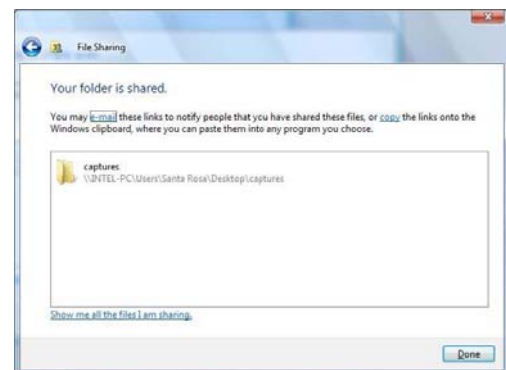
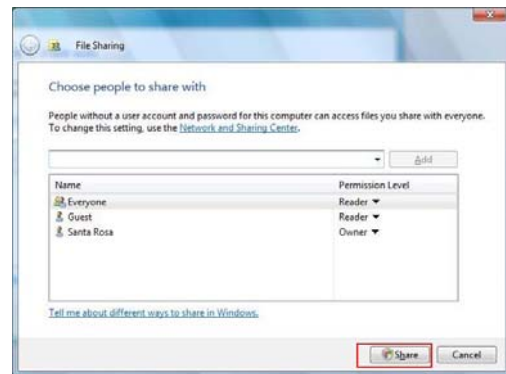
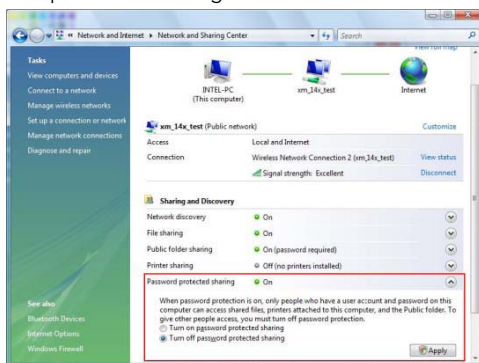
e. After you register the user account, then click "Share" button.

3. Setup of Network and Sharing Center

a. Click Start > Setting > Control Panel > Network and Internet > Network and Sharing Center



b. Select "Password Protected sharing" and select "Turn off password protected sharing".



4. Using the USB Host

✓ Note: How to eject the tray of external USB ODD (Optical Disk Drive)
 Stop playback and press number [3] button in order to eject the tray of external USB ODD. In addition, original DVD title with CSS Lock should not be played when connecting with USB host, but it is possible to play other format like XviD.

✓ Note: It is not possible to guarantee compatibility with all USB devices available in the marketplace. The MediaStation Pro has been tested on a variety of devices from various manufacturers without issue.

Connect your external USB device to one of the USB host ports of MediaStation Pro.

The USB icon will be activated on file selection screen.

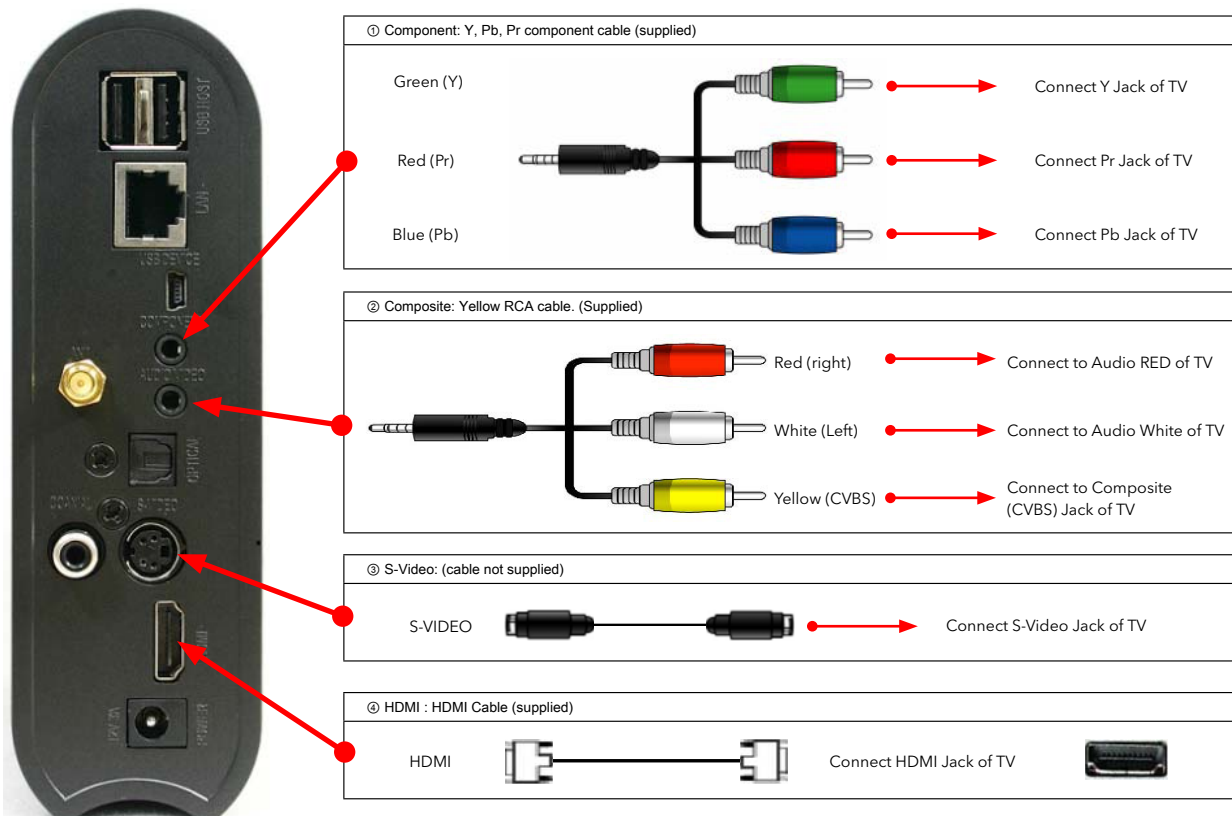
Select the USB icon and the files or folders of the USB device will be displayed. Select file for playback.



5. Connect to External AV Device

5.1 Connect Video Cable

MediaStation Pro supports 4 type of video output; "Composite, S-video, Component, HDMI". Use the video connection that your TV supports. Standard TV supports composite video connection, and this package includes a composite video cable.

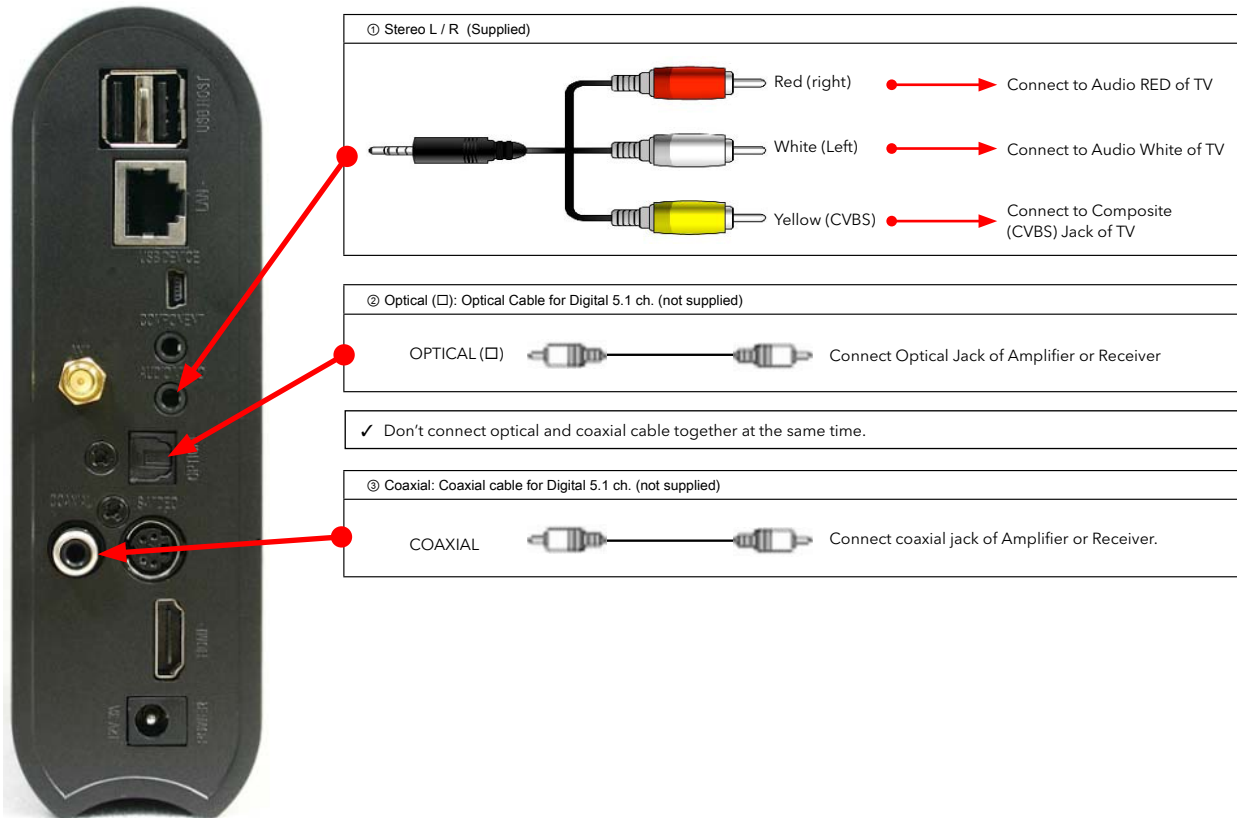


✓ If you can not see a picture after connecting video cable, check the following:

1. "TV" - Switch to Video Input Mode: Turn on TV, and switch to video input mode same as video connection. See TV user manual.
2. "MediaStation Pro" - Switch to Video Output Mode: Press [TV OUT] button repeatedly. Whenever you press [TV OUT], video output signal is changed.
3. Once you see a picture you must save video configurations of MediaStation Pro. See "6.1 Video Setup".

5.2 Connect Audio Cable

MediaStation Pro supports 3 type of audio output; "Stereo, Coaxial, Optical". Use the audio connection that your TV or Audio system supports. Normally TV supports stereo audio connection, and this package includes a stereo audio cable.



✓ If you can not hear sound after connecting Optical or Coaxial Cable, you must change audio setup of MediaStation Pro to Encoded Digital. See "6.2 Audio Setup"

6. Basic Setup

6.1 Video Setup

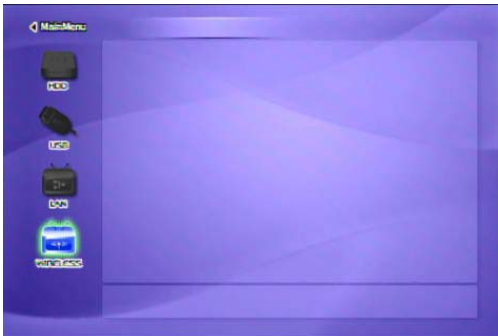
This is the guide for setting the video output of your MediaStation Pro.

✓ If you can not see a picture after connecting video cable, check the following:
 1. "TV "- Switch to Video Input Mode: Turn on TV, and switch to video input mode same as video connection. See TV user manual.
 2. "MediaStation Pro" - Switch to Video Output Mode: Press [TV OUT] button repeatedly. Whenever you press [TV OUT], video output signal is changed.

TV Video Input Mode	MEDIASTATION PRO Video Output Mode	Connection on TV, MEDIASTATION PRO	Video Cable Type
Normal Video	"TV Output" = Composite Mode "Composite Mode" = C/S-Video	CVBS or Composite (Generally Yellow)	Yellow RCA Cable (Supplied)
S-Video		S-Video	S-Video Cable * Black rounded
Component 480i	"TV Output" = Composite Mode "Composite Mode" = C/YPbPr		
Component 480p 720p 1080p	"TV Output" = Component Mode "Component Mode" = Select one among 480p, 720p, and 1080i same as TV input mode	Component 3 * Y(Green), Pb(Blue), Pr(Red)	Component Cable * Y(Green), Pb(Blue), Pr(Red)
HDMI 480p 720p 1080i 1080p 640x480 800x600 1024x768 1280x1024 1600x1200	"TV Output" = HD-DVI Mode "HD-HDMI Mode" = Select one among 480p, 720p, 1080i, 1080p, 640x480, 800x600, 1024x768, and 1280x1024, 1600x1200 same as TV input mode	HDMI	HDMI Cable

✓ NTSC, PAL : Standard of TV Output. Select a proper one for using in your country. (European standard is PAL)

Setup Procedure



① Turn on MediaStation Pro and press [SETUP] on Mode Selection screen.



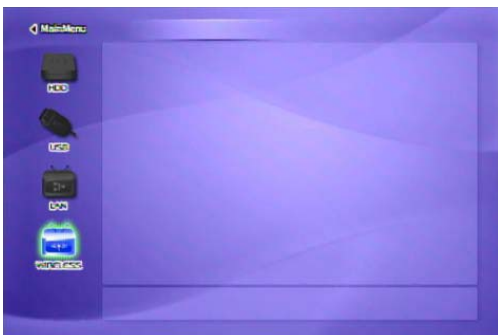
② Move to 'Video Out' icon and press [OK]. Setup box will be displayed under icon menu.
 ③ Select a TV Out Mode and each detailed video output mode according to the selected TV Out, and then press [OK].
 ④ Finally, press [SETUP] again for saving configurations.

6.2 Audio Setup

This is the guide for setting the audio output of MediaStation Pro. You can use Stereo or Digital 5.1 ch.

✓ Analogue/DCPM: Select when you connect the supplied audio cables (Red / White) to TV or Audio set directly.
 ✓ Encoded Digital: Select when you want to listen through 5.1Ch / DTS Dolby by connecting receiver (or amplifier) with an Optical or Coaxial cable.

Setup Procedure



① Turn on MediaStation Pro and press [SETUP] on Mode Selection screen.



② Move to 'Audio Out' icon and press [OK]. Setup box will be displayed under icon menu.
 ③ Select Audio Out Mode from Stereo or Encoded Digital, and then press [OK].
 ④ Finally, press [SETUP] again for saving configuration.

6.3 Network Setup

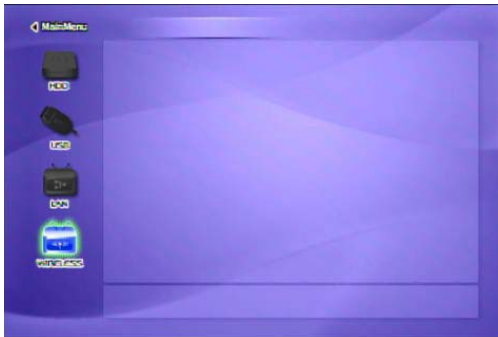
It is possible to obtain an IP address automatically from DHCP Server or IP Router, or set the specific IP address. Check your network environment.

✓ Note

DHCP On: You can use this option when it is possible to obtain IP address automatically from DHCP Server or IP Router. (Recommended for most users)

DHCP Off: When it is not possible to obtain IP address automatically or you connect to your PC directly without DHCP Server or IP Router, you have to use this option. Just write IP address and Subnet mask.

'DHCP Support On' Setup Procedure



① Turn on MediaStation Pro and press [SETUP] on Mode Selection screen.

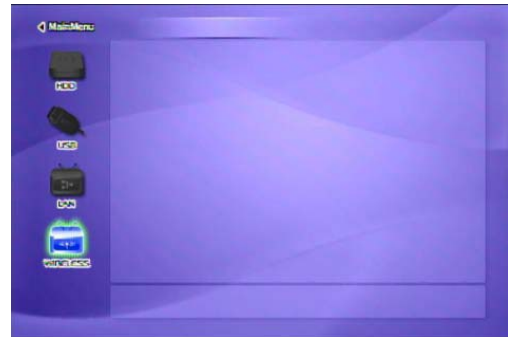


② Move to 'Network' icon and press [OK]. Setup box will be displayed under icon menu.
 ③ Select 'DHCP Support-ON' and press [OK].
 ④ Finally, press [SETUP] again for saving configuration..



✓ Check the obtained IP address
 Press [INFO] on Mode Selection screen, and you will see the current IP address obtained from the DHCP

DHCP Support OFF Setup Procedure



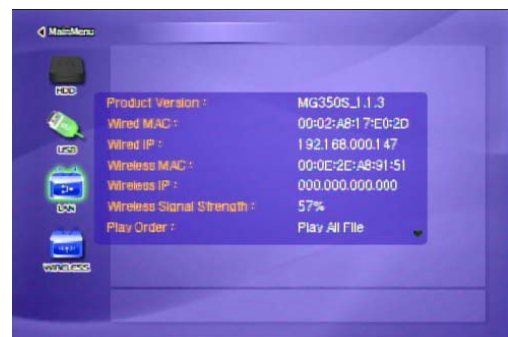
① Turn on MediaStation Pro and press [SETUP] on Mode Selection screen.



② Move to the 'Network' icon and press [OK]. Setup box will be displayed under icon menu.
 ③ Select 'DHCP Support-OFF' and press [OK].



④ Move to 'IP Address', 'Subnet' and press [OK]. Input box will be displayed, enter number with [Direction] button or [Number] button. Finally, press [ENTER] for saving configuration.



✓ Check the obtained IP address
 Press [INFO] on Mode Selection screen, and you will see the current IP address obtained from the DHCP server.

6.4 Wireless Setup

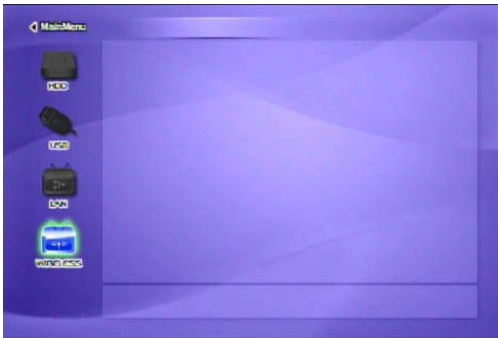
Refer to "2. Connect to PC via Network > 2.2 Wireless LAN Connection".

6.5 Wireless Security Setup

Refer to "2. Connect to PC via Network > 2.2 Wireless LAN Connection".

6.6 LED Setup

It is possible to turn on or off a backlight LED of arrow button on the front side. When the LED disturbs you in night, turn off the LED.



① Turn on MediaStation Pro and press [SETUP] on Mode Selection screen.



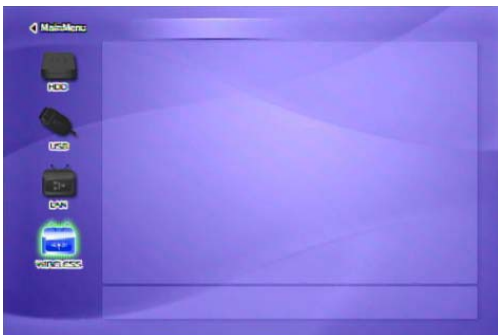
② Move to 'LED' icon and press [OK]. Setup box will be displayed under icon menu.
③ Select one out of 'ON' or 'OFF' and press [OK].
④ Finally, press [SETUP] again for saving configurations.

6.7 Photo View Setup

When playing photo files it is possible to enable or disable Back Ground Music (BGM) and set the playback interval time of each photo files.

✓ Back Ground Music, Music Slide Show
Make a 'music' folder (in a lower case at root directory) of built-in HDD and save MP3 files into this folder. When you play one or all photo files, you can listen to mp3 files and see the photo slide show together.
Before playing photo files, set the Photo mode by pressing [PHOTO] button.

Setup Procedure



① Turn on MediaStation Pro and press [SETUP] on Mode Selection screen.



② Move to 'Photo View' icon and press [OK]. Setup box will be displayed under icon menu.
③ Select 'ON' or 'OFF' and press [OK] and set up [Slide show] / [Effect].
④ Finally, press [SETUP] again for saving configuration.
*It is possible to set the slide show interval time.

6.8 Language Setup

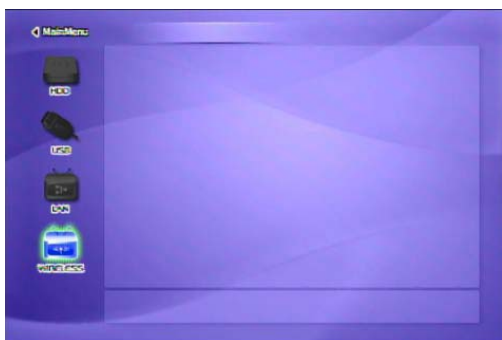
It is possible to set the preferable language. This language setup option may not be supported. In addition, this language will be applied on OSD Language, not subtitle.



6.9 Screen Ratio Setup

This is guide for setting TV Type. You can use 4:3 Letter Box, 4:3 Pan Scan, and 16:9.

Setup Procedure



① Turn on MediaStation Pro and press [SETUP] on Mode Selection screen.

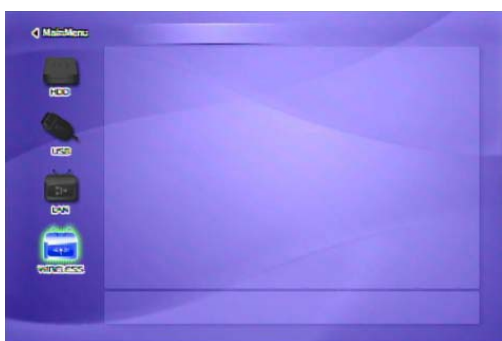


② Move to 'Scr. Rate' icon and press [OK]. Setup box will be displayed under icon menu.
 ③ Select one out of '4:3 Letter Box', '4:3 PanScan' or '16:9', and press {OK}.
 ④ Finally, press [SETUP] again for saving configurations.

6.10 Auto Play Setup

When this Auto Play function is On, MEDIASTATION PRO play the file continuously form the time of being stopped.

Setup Procedure



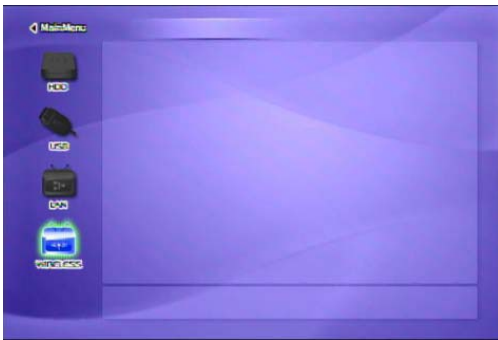
① Turn on MediaStation Pro and press [SETUP] on Mode Selection screen.



② Move to 'Auto Play' icon and press [OK]. Setup box will be displayed under icon menu.
 ③ Select one out of 'ON' or 'OFF' and press {OK}.
 ④ Finally, press [SETUP] again for saving configurations.

6.11 Internet (How to setup the Internet)

This is for how to connect MEDIASTATION PRO to the Internet.



① Turn on MediaStation Pro and press [SETUP] on Mode Selection screen.



② Go to the 2nd page and select [INTERNET] icon and press [ENTER] button then you will get the above page.

③ By using arrow buttons, go to the bottom setup.

By using arrow & number keys, set the configuration and press [ENTER] for saving of the configuration.

④ Press [SETUP] button for the saving of the configuration.

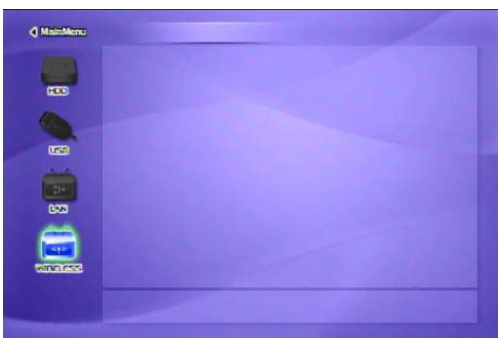


6.12 i-RADIO

How to set up the "i-Radio" on MEDIASTATION PRO.

✓ [Note]
i-Radio includes server lists of Shoutcast, Inlive (live broadcasting list scan) or UserList. (save pls, m3u files in "iradio " folder.)

How to setup



① After turning MediaStation Pro on, press [SETUP] button and go to [SETUP] page.



② Go to the 2nd page and select [i-RADIO] icon and press [ENTER] button.

③ By using arrow buttons, go to the bottom setup.

By using arrow & number keys, set the configuration and press [ENTER] for saving of the configuration.

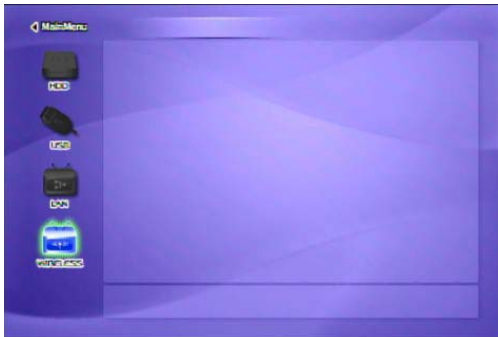
④ Press [SETUP] button for the saving of the configuration.



✓ Server lists
Shoutcast and Inlive has many server lists, you may wish to limit the server number list with this function.

If "Off" option has been selected at the server list setting

✓ [Note]
After you have created the "radio" folder in the root directory in the HDD of MEDIASTATION PRO, it shows only the list saved in pls, m3u file. You can utilize play list creation software or media player software to create personal internet radio playlists.



① Press * key at the main page, select "i-RADIO" icon and press [ENTER] button.



② Server lists saved in the "radio" folder at the root directory are displayed. Select a list and press [ENTER] button, after communicating with server radio stream should begin.

If "Shoutcast / Icecast" option has been selected at the server list setting



① It shows the live broadcasting server list and your own playlist from "radio" folder.

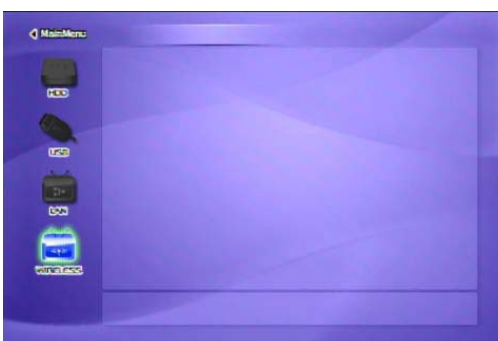


② Select a list and press [ENTER] button, after communicating with server radio stream should begin.

6.13 SKIN

With SKIN function, you can make your own GUI of MEDIASTATION PRO.

✓ [Note]
Save your own GUI or icon images in "skin1" folder at the root directory of MEDIASTATION PRO.



① After turning MediaStation Pro on, press [SETUP] button and go to [SETUP] page.



② Go to the 2nd page and select [SKIN] icon and press [ENTER] button then you will see the setup page.
③ By using arrow buttons, go to the bottom setup. By using arrow & number keys, set the configuration and press [ENTER] for saving of the configuration.
④ Press [SETUP] button for the saving of the configuration.

- ✓ SKIN Folder : you can make up to 10 (skin1,skin2...,skin10).
- ✓ User Color File: If "colorx.txt" file is in the SKIN folder, it is showed as the user wants. If there is no color.txt file, then the default color is showed.
- ✓ Font color: Select the font color on the GUI (default : black)
- ✓ Font color selected: Font color when it is selected (Default : White)

How to setup



① Make "skin1" folder and save "GUI" or "Images" in the folder at the root directory in a HDD of MediaStation Pro



② At Setup page of SKIN, select [ON] of [SKIN Support] and select [SKIN folder]. Press [SETUP] button for saving the configuration.



③ Now you see the changed GUI.
If you can not see the font, then change the font color.
(Setup Page => SKIN=> Change Font Color)

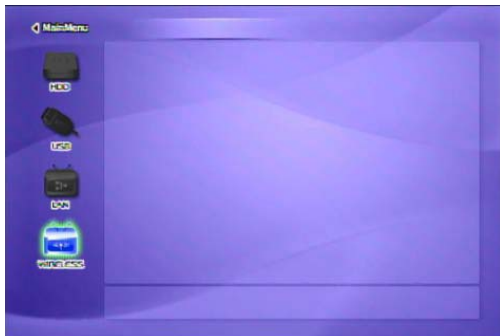


④ As the above, it supports several font colors.

6.14 ETC

Here you set up a number of miscellaneous features; sound effect, screensaver and loading message.

How to setup



① After turn MediaStation Pro on, press [SETUP] button and go to [SETUP] page.



② Go to the 2nd page and select [ETC] icon and press [ENTER] button then you will get the above page.

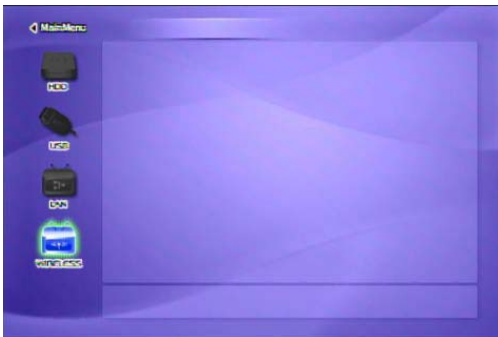
③ By using arrow buttons, go to the bottom setup.
By using arrow & number keys, set the configuration and press [ENTER] for saving of the configuration.

④ Press [SETUP] button for the saving of the configuration.

6.15 Protocol

Here you can set up data transfer protocol to access data stored on servers on your network

How to setup



① After turning MediaStation Pro on, press [SETUP] button and go to [SETUP] page.



- ② Go to the 2nd page and select [Protocol] icon and press [ENTER]
- ③ Select Protocol you require from the options of SAMBA, NFS, FTP or uPNP
- ④ Depending on protocol selected enter the required parameters
 - i) SAMBA Server Address Setting : Select Auto or Manual
 - ii) SAMBA Server Address : Enter the server address
 - iii) NFS Server Address : Enter the NFS server address
 - iv) NFS Shared Folder : Enter the shared folder path.
 - v) FTP Address : Enter the FTP address
 - vi) FTP ID : Enter the FTP ID

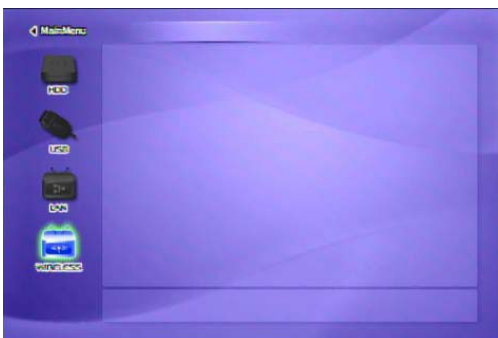
Use the numeric pad and up/down buttons to select appropriate characters, [PREV] button allows you to delete entries. Press [SETUP] button to save the configuration.



6.16 FTP Server / Client setup

You can set up for FTP Server / Client.

How to setup



① After turning MediaStation Pro on, press [SETUP] button and go to [SETUP] page.



- ② Go to the 2nd page and select [FTP] icon and press [ENTER]
 - ③ Use the numeric pad and up/down buttons to select appropriate characters, [PREV] button allows you to delete entries.
 - ④ Set the appropriate parameters:
 - i) FTP Client Local Disk : Enter the HDD path that you will use FTP client disk.
 - ii) MediaStation Pro FTP Server Setting : Set MediaStation Pro as FTP server.
 - iii) FTP Server Disk : Enter the HDD path that you will use FTP Server disk.
 - iv) Server ID : create the Server ID
 - v) Server Password : create the password to access the FTP server.
 - vi) Server Port : The default is 21 and you can select a preferable port number.
- Press [SETUP] button to save the configuration.

7. How to Play (Remote Control)

7.1 Basic Screen Menu

7.1.1 Mode Selection

After turning on the MEDIASTATION PRO, you can see mode selection screen. In this screen you can select HDD, External USB device, LAN(wired network) or WIRELESS(wireless network)

You can select one out of them.

7.1.1.1 Built-in HDD or external USB device

Following example is in case of built-in HDD. External USB device is same as built-in HDD.



① [Mode Selection] Select 'HDD' icon and press [OK]. (In case of external USB device, select 'USB' icon)



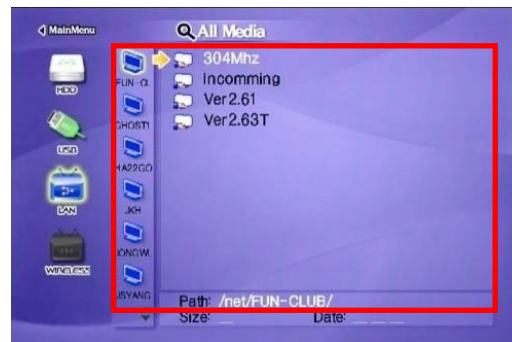
② Data of built-in HDD is displayed. In order to play, select a file and press [OK].

7.1.1.2 Wired & Wireless Network

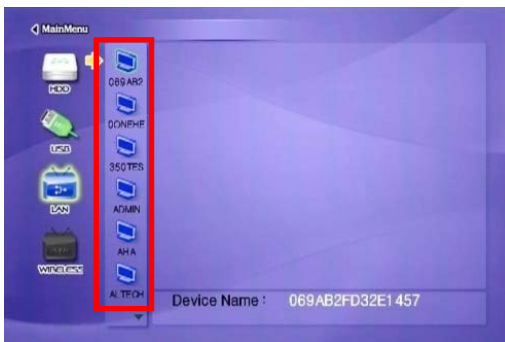
Following example is in case of wired network. Functionality is the same for wireless networking.



① [Mode Selection] Select 'LAN' icon and press [OK]. (In case of wireless network, select 'WIRELESS' icon,



② Shared folder of PC is displayed. In order to play, select a file and press [OK].

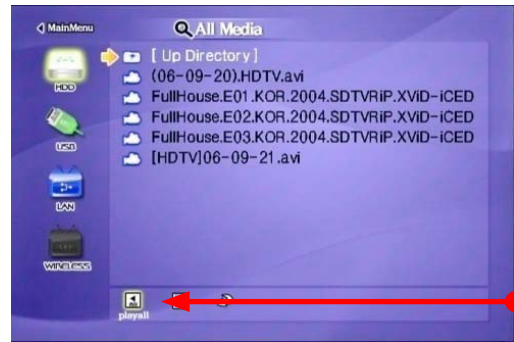


③ [PC List on Network] All accessible computers on your network will be displayed on the screen.

✓ Refresh Network PC
To refresh list of computers on your network press [STOP]

7.1.2 File Selection

Select a file and press [OK] in order to play.



Function and Button Descriptions

Remote Control	Function	Descriptions
MENU	Menu Icon	Menu Icon is displayed including 'Play one, Play all and Play-list'. Press again for returning file selection screen.
▲▼▶◀	Direction Key	Direction key
PREV ◀◀	Move by page	In case of two or more file list page, move to previous page.
NEXT ▶▶	Move by page	In case of two or more file list page, move to next page.
SLOW (^)	Up directory	Return to up directory.
DEVICE	Mode Selection	Return to HDD, USB, LAN, WIRELESS selection screen.
OK ▶	Playback	Play a file.
SELECT (Number 1)	Register a file at Play-List	Use when registering a file at Play-List. After selecting a file, move to "[MENU]>Play-List"
SELECT ALL (Number2)	Register all files at Play-List	Use when registering all files at Play-List. After selecting files, move to "[MENU]>Play-List"
MOVIE	Movie Mode	Only Movie files are displayed.
MUSIC	Music Mode	Only Music files are displayed.
PHOTO	Photo Mode	Only Photo files are displayed *After pressing [PHOTO], you can use photo slide show.
ALL MEDIA	All Media Mode	All media files are displayed including movie, music and photo.
INFO	-	Current information of MEDIASTATION PRO is displayed.
TV OUT	Video Out Signal	Press button to cycle through video signal types until you see a picture on your display screen.
Br.CONT	Control luminosity, colour depth, brightness	When pressing this button, 3 modes switch. After selecting a mode, change settings with ▼▲ arrow buttons.
SETUP	-	Move to setup screen.

✓ Play All File, Play One File

Press [MENU] and move to 'Play Mode' icon. Two Play modes are available, when pressing [OK], change the mode "Play one>Play all". After selecting one, press [MENU] again for saving configurations.

*Play One: Play the selected file and stop.

*Play All: Played the selected file and continue to play next all files at the directory including sub directory.

✓ Refresh Network

Press [STOP], computers listed on the network or shared folder list are refreshed.

✓ Jump to first or last page

There might be two or more list pages in case of many files at directory. At the time, conveniently jump to first or last page.

Jump to last page from first page: Move to [Up Directory] on the top of first page and press [] or [Previous].

Jump to first page from last page: Move to the last file on last page and press [] or [Next]

✓ See a long directory path

In case of Directory path information is longer than file information, press [Scr.SIZE].

7.2 Play Video Files



Select a file and press [OK].



When pressing [MENU] while playing a file, "Tool Box Menu" is displayed. Tool Box allows using detailed playback function.

Function and Button Descriptions

Remote Button	Function	Description
MENU	Tool Box	Tool Box is displayed. For returning to playback, press again.
OK ►	Playback	Play file.
	Pause	When pressing while playing a file, pause the playback. To resume playback, press again.
NEXT ►►	Playback Next File	Play the next file after the file currently being played. ** "Play all" must be selected in order to use this function.
PREV ◄◄	Playback Previous File	Play the previous file after the file currently being played. ** "Play all" must be selected in order to use this function.
Direction ►►►	Fast Forward	Press this button to change play speed : 2x -4x- 8x -16x - 32x
Direction ◄◄◄	Rewind	Press this button to change reverse play speed : 2x -4x- 8x -16x - 32x
SLOW	Playback Slow	Play slowly 1/2x, 1/4x, and 1/8x whenever pressing this button.
SEARCH	Jump to Preferable Playback Time	Move to a selected time of a file. Enter your preferred playback time with [Number] and press [OK]
VOLUME +	Volume Up	Volume up.
Direction ▲		
VOLUME -	Volume Down	Volume down.
Direction ▼		
MUTE	Sound Off	Mute the sound.
SUBTITLE	Subtitle Move & Size	It is possible to change subtitle size and location. ◄► arrow button changes size and ▲▼ arrow button changes location. After doing, press [OK].
	Subtitle Sync.	It is possible to set the subtitle sync. with ◄►(one second) ▲▼(60 second) when motion and subtitle synchronisation does not match.
	Subtitle Select or Hide	The subtitle name same as video file is displayed on screen automatically. However, it is possible to open the other preferred subtitle files or hide.
	Subtitle Language Select	It is possible to switch each subtitle language when the subtitle is dual language format, for example, including a local language and English. * When selecting 'Discriminating subtitle language', first subtitle language will be displayed.
BOOKMARK	Specific Playback Time Memory	Save specific playback time when pressing this button. If you want to see book mark list, press [BOOKMARK] on file selection screen.
AUDIO	Dual Audio	It is possible to switch each audio language when the audio format is dual-audio, for example, including a local language and English.
INFO	Show File Information	Show the file information which is being played. In order to hide the information, press this button again.
Brt. CONT	Control luminosity, color depth, brightness	When pressing this button, 3 modes switch. After selecting a mode, change settings with ▲▼ arrow buttons.

7.3 File Selection

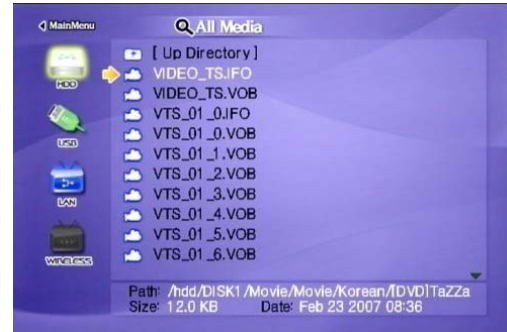
DVD manager function supports the playback of backed up DVD Files in the same way as the original DVD.

Make a folder and then save all the DVD files into the folder. After connecting TV(or Monitor), select VIDEO_TS.IFO file at the folder. Make sure that all the DVD backup files including VIDEO_TS.IFO from one DVD title will be located in one folder

✓ √ Note
If you can not find VIDEO_TS.IFO file among all the backed up files from an original DVD title, DVD manager function will not work.



Move to the folder including backed up DVD files



Select 'video_ts.ifo' file and press [OK] button.

Function and Button Descriptions

Remote Control	Function	Descriptions
AUDIO	Dual Audio	It is possible to switch each audio language when the audio format is dual-audio, for example, including a local language and English.
SUBTITLE	Select Subtitle Type	Subtitle type will be changed whenever pressing this button.
Scr. SIZE	Screen Size	Screen size will be changed when press the button.
MENU	Go to Menu	Move to main menu while playing DVD.
SLOW	Playback Slow	Play slowly 1/2x, 1/4x, and 1/8x whenever pressing this button.
REPEAT	Chapter, Title Repeat	Set chapter, title repeat.
A-B REPEAT	A-B repeat	Set the A-B repeat.
TITLE	Go to Title Menu	Move to title menu while playing DVD.
ANGLE	Angle	Apply angle function.
INFO	Show File Information	Show the file information which is being played. In order to hide the information, press this button again.
SEARCH	Jump to Preferable Playback Time	Move to a selected time of a file. (It is not possible to use time searching bar.)
Brt. CONT	Control luminosity, color depth, brightness	When pressing this button, 3 modes switch. After selecting a mode, change settings with ▲▼ arrow buttons.
NEXT ▶▶I	Playback Next Chapter	Play a next chapter.
PREV I◀	Playback Previous Chapter	Play a previous chapter.
FF ▶▶▶	Fast Forward	Whenever pressing this button, play speed is changed with 8x, 16x, 32x, 48x in forward.
REW ◀◀◀	Rewind	Whenever pressing this button, play speed is changed with 8x, 16x, 32x, 48x in backward.
OK ▶II	Playback	Play 'Video_ts.ifo' file.
	Pause	Pause playback, if pressing this button when a file is being played. In order to play again, press this button again.
VOLUME + Direction ▲	Volume Up	Volume Up.
VOLUME - Direction ▼		
MUTE	Sound Off	Mute the sound. In order to hear sound, press this button again.

7.4 Play Audio File



Move to the folder including backed up DVD files



When pressing [MENU] while playing a file, "Tool Box Menu" is displayed. Tool Box allows using detailed playback function.

Function and Button Descriptions

Remote Control	Function	Descriptions
MENU	Tool Box	Tool Box is displayed. For returning to playback, press again.
OK ►	Playback	Play file.
	Pause	When pressing while playing a file, pause the playback. For returning to playback, press again.
NEXT ►►	Playback Next File	Play a next file after a current playback file. * Play mode must be in Play all in order to use this function.
PREV ◄◄	Playback Previous File	Play a previous file after a current playback file. * Play mode must be in Play all in order to use this function.
FF ►►►	Fast Forward	Whenever pressing this button, play speed is changed with 2x, 4x 8x, 16x, 32x in forward.
REW ◄◄◄	Rewind	Whenever pressing this button, play speed is changed with 8x, 16x, 32x in backward.
SEARCH	Playback Time	Enter your preferable playback time with [Number] and press [OK].
VOLUME +	Volume Up	Volume Up. *It is not possible to use this button when manual subtitle is displayed while playing audio file.
Direction ▲		
VOLUME -	Volume Down	Volume Down. *It is not possible to use this button when manual subtitle is displayed while playing audio file.
Direction ▼		
MUTE	Sound Off	Mute the sound. In order to hear sound, press this button again.
INFO	Show File Information	Show the file information which is being played. In order to hide the information, press this button again.
Brt. CONT	Control luminosity, color depth, brightness	When pressing this button, 3 modes switch. After selecting a mode, change settings with ▲▼ arrow buttons.

7.5 Play Photo File



Select a file and press [OK].



When pressing [MENU] while playing a file, "Tool Box Menu" is displayed. Tool Box allows using detailed playback function.

Function and Button Descriptions

Remote Control	Function	Descriptions
MENU	Tool Box	Tool Box is displayed. For returning to playback, press again.
OK ►	Playback Pause	Play file. When pressing while playing a file, pause the playback. For returning to playback, press again.
NEXT ►►	Playback Next File	Play a next file after a current playback file. * Play mode must be in Play all in order to use this function.
PREV ◄◄	Playback Previous File	Play a previous file after a current playback file. * Play mode must be in Play all in order to use this function.
INFO	Show File Information	Show the file information which is being played. In order to hide the information, press this button again.
Brt. CONT	Control luminosity, color depth, brightness	When pressing this button, 3 modes switch. After selecting a mode, change settings with ▲▼ arrow buttons.

✓ Photo Slide Show
When play mode is set on 'Play all(Default value)', all photo files will be played continuously. So, It is possible to use as photo slide show.

✓ Music Slide Show
Make a 'music' folder (in lowercase) at the root directory of built-in HDD and save MP3 files at the folder. When you play one or all photo files, you can listen to the mp3 files and view photo slide show simultaneously.

✓ Set the playback interval time
For a more convenient photo slide show, it is possible to set slide show interval setting . Press [SETUP] to access settings.

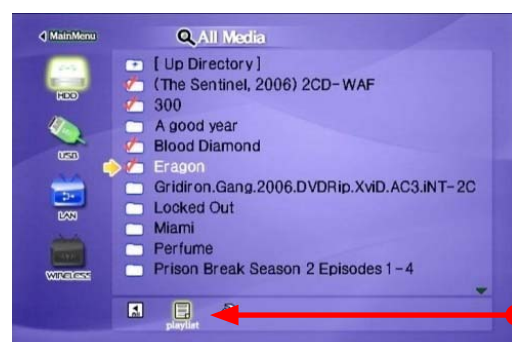
7.6 Make a Play List

You can make a playlist by selecting your favourite media files. Music, photo and movie files may be combined in the list.

✓ Note
After rebooting MEDIASTATION PRO, registered play list will be clear.



① Highlight the required file(s) and confirm by pressing [SELECT] or [SELECT ALL].



② After compiling files, press [MENU] and select "Play List".



- ③ Play List screen is displayed.
 - Play: Play the registered files.
 - Cancel: Close the Play List screen.
 - Move up, down: Change the file location..
 - Shuffle: File location is mixed randomly.
 - Delete: Delete the selected file..
 - Delete all: Delete all the registered files.

7.7 Create a Private Folder

You can create your own folder of media content. This can be viewed by entering a PIN code during the device setup.

✓ Note

The "private" folder access is only controlled during playback on a display. If the HDD is connected to a computer all folders (and their contents) including "private" folder can be viewed



① When connected to your computer create a folder in the root directory called "private" (in lowercase)

- ② You can choose to enable "private folder view" by highlighting "ON" and pressing [OK]
- ④ You can set your own password. The default password is 0000. Press down arrow to move to next input box.
- ⑤ Enter your chosen password using the numeric keys.
- ⑥ Press down arrow to move to next input box.
- ⑦ Confirm chosen password.
- ⑧ Press [OK] and press [SETUP] to save setting change.
- ⑨ "private" folder is now visible.



③ Press [SETUP] button, highlight "Folder Lock" and select [OK]

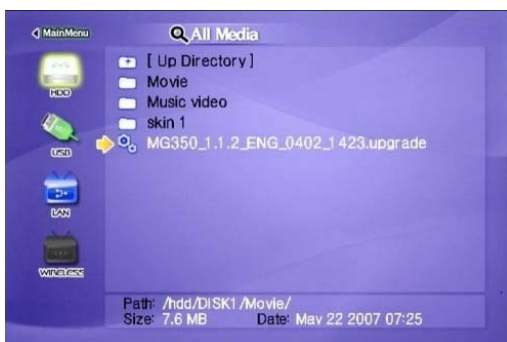
8. Firmware Upgrade

From time to time a firmware upgrade file may be available, please check www.verbatim-europe.com/support. You can check the version of firmware installed in your MediaStation Pro by pressing [INFO] button from main file selection screen.

Download upgrade file from website and save to the root directory of MediaStation Pro hard disk.

After connecting TV set, highlight the upgrade file and press [OK]. Upgrade will be completed automatically.

After finishing upgrade, you can check firmware version on Setup screen. Press [SETUP] button.



Technical Support

If you are experiencing difficulty installing or using your Verbatim product, please visit the main Verbatim Technical Support website at www.verbatim-europe.com. From this page you can access our library of user documentation, read answers to frequently asked questions, and download available software updates. Although most of our customers find this content sufficient to put them back on the right track, this page also lists ways in which you can contact the Verbatim Technical Support Team directly.

Europe: For technical support in Europe e-mail drivesupport@verbatim-europe.com or call 00 800 3883 2222 in the following countries: Austria, Belgium, Denmark, Finland, France, Germany, Hungary, Italy, Luxemburg, Monaco, Netherlands, Norway, Poland, Portugal, Republic of Ireland, Spain, Sweden, Switzerland and the United Kingdom. All other countries call +353 61 226586.

Limited Warranty Terms

Verbatim Limited warrants this product to be free from defects in material and workmanship for a period of 2 years from date of purchase. This warranty excludes batteries. If this product is found to be defective within the warranty period, it will be replaced at no cost to you. You may return it with your original cash register receipt to the place of purchase or contact Verbatim.

In the following European countries, Austria, Belgium, Denmark, Finland, France, Germany, Greece, Hungary, Italy, Luxembourg, Monaco, Netherlands, Norway, Poland, Portugal, Republic of Ireland, Spain, Sweden, Switzerland, and the United Kingdom call 00 800 3883 2222. All other European countries call +353 61 226586. You can email drivesupport@verbatim-europe.com.

Product replacement is your sole remedy under this warranty, and this warranty does not apply to normal wear or to damage resulting from abnormal use, misuse, abuse, neglect or accident, or to any incompatibility or poor performance due to the specific computer software or hardware used. VERBATIM WILL NOT BE LIABLE FOR DATA LOSS OR ANY INCIDENTAL, CONSEQUENTIAL OR SPECIAL DAMAGES, HOWEVER CAUSED, FOR BREACH OF WARRANTIES OR OTHERWISE. This warranty gives you specific legal rights and you may also have other rights which vary from state to state or country to country

WEEE Notice

The Directive on Waste Electrical and Electronic Equipment (WEEE), which entered into force as European law on 13th February 2003, resulted in a major change in the treatment of electrical equipment at end-of-life.



The WEEE logo (shown at the left) on the product or on its box indicates that this product must not be disposed of or dumped with your other household waste. For more information about electronic and electrical waste equipment disposal, recovery, and collection points, please contact your local municipal household waste disposal service or shop from where you purchased the equipment.

FCC Compliance

This equipment has been tested and found to comply with the limits for a Class B digital device, pursuant to Part 15 of the FCC Rules. These limits are designed to provide reasonable protection against harmful interference in a residential installation. This equipment generates, uses and can radiate radio frequency energy and, if not installed and used in accordance with the instructions, may cause harmful interference to radio communications. However, there is no guarantee that interference will not occur in a particular installation. If this equipment does cause harmful interference to radio or television reception, which can be determined by turning the equipment off and on, the user is encouraged to try to correct the interference by one or more of the following measures:

Reorient or relocate the receiving antenna.

Increase the separation between the equipment and receiver.

Connect the equipment into an outlet on a circuit different from that to which the receiver is connected.

Consult the dealer or an experienced radio/TV technician for help.

CE Declaration EC DECLARATION OF CONFORMITY

It is hereby declared that this product complied with the essential protection requirements of Council Directive 89/336/EEC and its amendments on the approximation of the laws of the Member States relating to electromagnetic compatibility.

This declaration applies to all specimens manufactured identical to the model submitted for testing/evaluation.

EN 55022: 1998 + A1: 2000 + A2: 2003

EN 61000-3-3:1995 + A1: 2001

EN 55024: 1998 + A1: 2001 + A2: 2003

IEC 61000-4-2: 1995 + A1: 1998 + A2: 2000

IEC 61000-4-3: 2002 + A1: 2002

IEC 61000-4-4: 1995 + A1: 2000 + A2: 2001

IEC 61000-4-5: 1995 + A1: 2000

IEC 61000-4-6: 1996 + A1: 2000

IEC 61000-4-8: 1993 + A1: 2000

IEC 61000-4-11: 1994 + A1: 2000

RoHS Compliance

This product is in compliance with Directive 2002/95/EC of the European Parliament and of the Council of 27 January 2003, on the restriction of the use of certain hazardous substances in electrical and electronic equipment (RoHS) and its amendments.

THIS DEVICE COMPLIES WITH PART 15 OF THE FCC RULES. OPERATION IS SUBJECT TO THE FOLLOWING TWO CONDITIONS:

(1) THIS DEVICE MAY NOT CAUSE HARMFUL INTERFERENCE, AND

(2) THIS DEVICE MUST ACCEPT ANY INTERFERENCE RECEIVED, INCLUDING INTERFERENCE THAT MAY CAUSE UNDESIRE OPERATION.